

2013 3rd Korea Open Busan International Dragon Boat Regatt

a

Suyeong River, APEC Naru Park in Haeundae, Busan, Korea

1st - 6th Oct, 2013

INFORMATION BULLETIN NO.1

To. All International Dragon Boat Crew Members

The 3rd Korea Open Busan International Dragon Boat Regatta will be held from Tuesday 1st Oct 2013 to Sunday 6th Oct 2013, at the Suyeong River, APEC Naru Park in Haeundae, Busan, Korea. We cordially would like to invite all of international dragon boat club teams and crews. The following information would be provided for all the Dragon Boat Crew Members.

1. Divisions, Racing & Competition Classes and Distances

1) Divisions

Only Premier - the primary class of racing.

There are no restrictions on competitor's age.

2) Racing & Competition Classes

(1) Open : no restriction on crew composition(gender)

(2) Women : for female crews only including the Drummer and Steerer

(3) Mixed : DB22 - minimum of 8 and maximum of 12 female paddlers

DB12 - minimum of 4 and maximum of 6 female paddlers

3) Distance – 200m & 500m only

2013 3rd Korea Open Busan International Dragon Boat Regatt

a

4) Number of Competitors

DB22 – 18 to 20 Paddlers, 1 Drummer, 1 Steerer, 4 Reserves

DB12 – 8 to 10 Paddlers, 1 Drummer, 1 Steerer, 2 Reserves

2. Race Category

	Category	200m	500m
DB22	Premier Open		
	Premier Women		
	Premier Mixed		

	Category	200m	500m
DB12	Premier Open		
	Premier Women		
	Premier Mixed		

3. Racing Days

1) Racing Day1 (Thu, 3rd Oct, 2013)

(1) 200m DB22 Open, Women, Mixed

(2) 200m DB12 Open, Women, Mixed

2) Racing Day2 (Fri, 4th Oct, 2013)

(1) 500m DB22 Open, Women, Mixed

(2) 500m DB12 Open, Women, Mixed

4. Competition Regulations & Rules of Racing

This race will comply with IDBF Competition Regulations and will be under the IDBF Rules of Racing. May be exceptions depending on the situations.

5. Prizes

2013 3rd Korea Open Busan International Dragon Boat Regatt

a

Trophies and medals will be awarded to the winners.

6. Outline Programme

Date	Time	Event
1 st Oct (Tue)	0900-1500	Crews Arrival, Registration, Check in, Training
2 nd Oct (Wed)	0900-1500	Crews Arrival, Registration, Check in, Training
	1600-1700	Crew Managers Meeting
3 rd Oct (Thu)	1000-1100	Opening Ceremony
	1100-1230	200m(DB22,DB12)-Open, Women, Mixed
	1400-1700	200m(DB22,DB12)-Open, Women, Mixed
4 th Oct (Fri)	1000-1200	500m(DB22,DB12)-Open, Women, Mixed
	1400-1700	500m(DB22,DB12)-Open, Women, Mixed
	1700-1800	Awards Ceremony, Closing Ceremony
5 th Oct (Sat)	0900-1800	Busan City Tour or Free Time
	1900-2100	Celebration Party
6 th Oct (Sun)	0900-	Crews Departure

This above programme is provisional and is provided to assist crews with their initial planning. This Programme is subject to changes. After all Confirmed Entry Forms have been reached, the competition schedule would be confirmed.

7. Deadline Dates

With Entry Form to the Organizing Committee

- 1) Provisional Entries : Friday, 19th July, 2013
- 2) Confirmed Entries : Monday, 12th August, 2013
- 3) Final Named Entries : Friday, 30th August, 2013

2013 3rd Korea Open Busan International Dragon Boat Regatt

a

8. Reference

- 1) Transportation (between Venue/Airport to Hotel), Lunch(on Racing days – 3rd, 4th), Celebration Party would be hosted by Organizing Committee. The Accommodation list would be attached.
- 2) Crew List – The Crew list must be submitted to the Organizing Committee in the Confirmed Entry, deadline Monday, 12th August, 2013. Crew List Form will be attached in Information Bulletin No.2.
- 3) Accreditation Photos
All of the participants would be required to submit a Photograph in the Confirmed Entry, deadline Monday, 12th August, 2013. Further Information will be referred on the Information Bulletin No.2.

9. Contact Information

- **official Organizing Committee(Entries, Registration, Request)**
: bdba@hanmail.net / +82-51-743-5855
- **charged with accommodation, tour**
: 2013dragonboat@gmail.com / +82-51-754-6988

10. Official Hotel List

*Please note that bed type may change depending on the situation

1) Homers Hotel

193-1, Gwangan2-dong, Suyeong-gu, Busan /

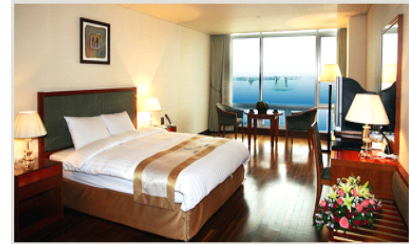
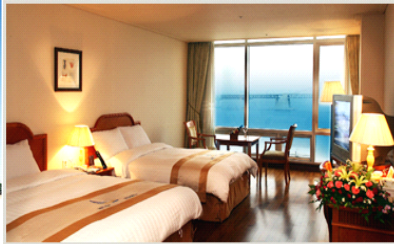
<http://www.homershotel.com/english/main.php>

The beautiful beaches of Busan attract visitors from around the world, and Homers Hotel has everything you need for a memorable stay in the 'summer capital' of Korea. The hotel is close to the serene blue sea and Gwangan Diamond Bridge. It is well connected to the surrounding area by the subway and bus services. The business rooms at Homers Hotel offer spectacular views of Mountain and

2013 3rd Korea Open Busan International Dragon Boat Regatt

a

d the city centre, and VIP rooms have beach views. All rooms are spacious and tastefully decorated; they are equipped with air-conditioning, internet connection and satellite TV. Other amenities available to guests include fitness centre and



sauna, hair salon, parking and laundry services.

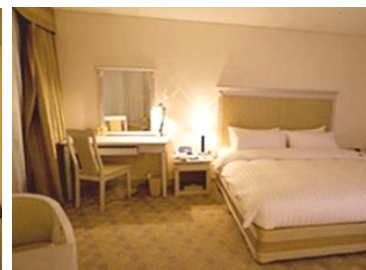
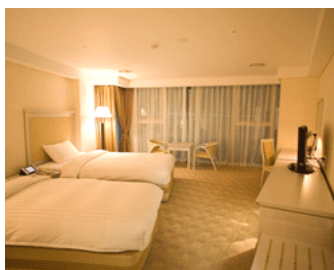
ROOM TYPE	PRICE(per room/2pax)	REMARKS
Deluxe Mountain (Double/Twin)	\$100	Breakfast \$15
Deluxe Ocean (Double/Twin)	\$150	Breakfast \$15

2) Aqua Palace Hotel★★★★★

192-5 Gwangan 2-dong, Suyeong-gu, Busan

<http://www.aquapalace.co.kr/eng/>

Situated on the beach in the heart of Busan, Hotel Aqua Palace is close to Gwangalli Beach, Gwangan Diamond Bridge, and Busan Museum of Modern Art. Additional attractions near this hotel include BEXCO and UN Memorial Cemetery. Hotel Aqua Palace has *a water park, an indoor pool, and a spa tub*. There is *a business center* on site. This beach hotel offers *a coffee shop/café and a bar/lounge*. Additional amenities include *a fitness facility, a sauna, and laundry facilities*.



s.

2013 3rd Korea Open Busan International Dragon Boat Regatt

a

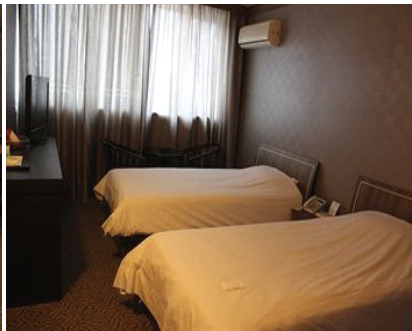
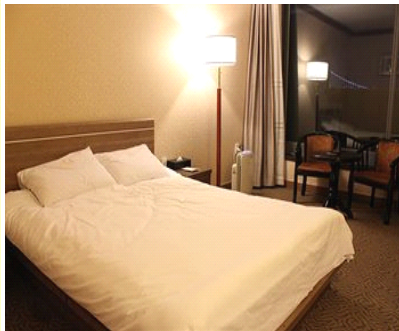
ROOM TYPE	PRICE(per room/2pax)	REMARK
Deluxe(Double/Twin)	\$180	\$15(weekday) \$17(weekend)

3) Dawn Beach Hotel ★★★

199-7, Gwangan1-dong, Suyeong-gu, Busan

<http://www.dawnbeach.co.kr/>

Located near Gwangan Beach in Busan, Dawn Beach Hotel features rooms with free internet access and cable TV. It features a lounge bar, coffee shop and free parking. Rooms at the Dawn Beach Hotel feature air conditioning and heating facilities. A sitting area, bathrobes and slippers are provided. Guests can relax at the hotel's sauna. Karaoke facilities are available.



ROOM TYPE	PRICE(per room/2pax)	REMARK
Standard(Double/Twin)	\$90	Breakfast \$10

4) Hotel Press ★★★

25-6, Namcheon-Dong, Suyeong-Gu, Busan

<http://presshotel.co.kr/>

Hotel Press offers boutique accommodation in Gwangan Beach Area, 350 metres from Namcheon Subway Station (Line 2). The stylish hotel provides free parking and free Wi-Fi access on site. Guestrooms feature modern interiors and offer both heating and air-conditioning facilities. Each room comes with a personal computer, tea/coffee making facilities and a flat-screen TV with cable channels. The hotel's restaurant

2013 3rd Korea Open Busan International Dragon Boat Regatt

a

serves a selection of local dishes. Drinks can be enjoyed at the on-site bar. Laundry and dry cleaning services are available at this hotel. Other services include currency exchange and luggage storage. Hotel Press is located 2 km from the Gwangalli Beach, 4 km from BEXCO and 5 km from the Haeundae Beach. Gimhae International Airport is only a 30-minute drive away.



port is only a 30-minute drive away.

ROOM TYPE	PRICE(per room/2pax)	REMARK
Standard(Double)	\$90(weekday) \$120(weekend)	Breakfast \$10

5) Castle Beach Hotel ★★☆☆

110-60, Minrak-Dong, Suyeong-Gu, Busan

<http://www.castlebeach.co.kr/>

Located in Gwangan Beach, Castle Beach Hotel offers rooms with free internet and private bathrooms. The Victorian-style hotel offers views of Gangan Bridge, various restaurants and free parking. Each air-conditioned room features heating and a private balcony. Room amenities include a minibar, telephone and TV. Bathrobes and slippers are provided. Guests can enjoy Karaoke facilities. Luggage storage and a safety deposit box are available. Western,

2013 3rd Korea Open Busan International Dragon Boat Regatt

a

Japanese and Korean cuisines are served at the hotel's restaurants. Castle Beach Hotel is 17 km away from the Gimhae International Airport.



ROOM TYPE	PRICE(per room/2pax)	REMARK
Standard(Double/Twin)	\$80	Breakfast \$10

11. Surrounded Race Venue



- A. Official venue.
- B. Castle Beach Hotel
- C. Aqua Palace Hotel
- D. Homers Hotel
- E. Dawn Beach Hotel
- F. Hotel Press